

## **BiAloe®** Formulation Guide and Structure Function Claims

### **Nutraceuticals**

BiAloe® is a free flowing powder that can easily be formulated into a variety of nutrition supplement products. The recommended daily intake of 160 mg. BiAloe® is ideal for capsule, tablet, effervescent tablet, powder, stick pack, beverage, and bar formulations. Additionally,

BiAloe® can be combined with numerous ingredients to create unique formulations for new product entries into the market.



### **Foods & Beverages**

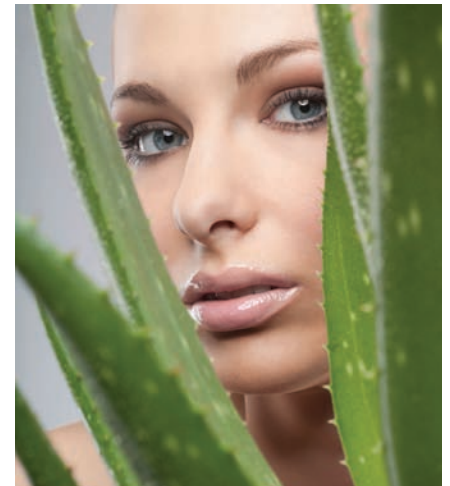
BiAloe® mixes easily into many food and beverage product formulations. Due to the high Acemannan content BiAloe® may be used at the rate of one-third to one-tenth of other commercially available Aloes. BiAloe® has excellent solubility in water based recipes, as well as a pleasant, easily masked taste.

### **Skin Care & Cosmetics**

BiAloe® is excellent for topical skin care and cosmetic applications. The minimum suggested level is 0.5% of the carrier. Using up to 2% is not uncommon in high-end products and will achieve much faster results. BiAloe® dissolves completely into water based products and can be suspended in oil based formulations.

### **Medical & Pharmaceutical**

BiAloe® is suitable for formulation of medical devices or pharmaceuticals for wound care. To prepare moist gels for wound dressings we recommend a level of 1%. For topical creams and ointments results will increase proportionately as the level of BiAloe® increases up to 3% of the carrier.



## Structure Function Claims

### *BiAloe® Supports an Already Healthy:*

- Immune System <sup>1, 2, 3</sup>
- Stomach Acid Level that is in the normal range <sup>4, 5, 6</sup>
- Gastrointestinal Tract <sup>7, 8, 9</sup>
- Blood Sugar Level that is in the normal range <sup>10, 11, 12</sup>
- Cholesterol Level that is in the normal range <sup>13, 14</sup>
- Intestinal Flora Level as a Pre-Biotic <sup>15, 16, 17</sup>

### *Additionally, BiAloe® Supports Normal:*

- Anti-Oxidant Functions <sup>18, 19, 20</sup>
- Wound & Burn Repair <sup>21, 22, 23</sup>

## References:

1. Im SA, Lee YR, Lee YH, Lee MK, Park YI, Lee S, Kim K, Lee CK. In vivo evidence of the immunomodulatory activity of orally administered Aloe vera gel. Arch Pharm Res. 2010 Mar;33(3):451-6. Epub 2010 Mar 30.
2. Im SA, Oh ST, Song S, et al. Identification of optimal molecular size of modified Aloe polysaccharides with maximum immunomodulatory activity. International Immunopharmacology. 2005;5(2):271-279.
3. Zhang L, Tizard IR Activation of a mouse macrophage cell line by acemannan: the major carbohydrate fraction from Aloe vera gel. Immunopharmacology. 1996 Nov;35(2):119-28.
4. Bland, Jeffrey. Effect of orally consumed Aloe vera Juice on Gastrointestinal Function in Normal Humans. Preventative Medicine, March-April 1985.
5. Gawron-Gzella A, Witkowska-Banaszczak E, Dudek M. Herbs and herbal preparations applied in the treatment of gastric hyperacidity, gastric and duodenal ulcer in cigarette smokers. Przegl Lek. 2005;62(10):1185-7.
6. Blitz JJ, Smith JW, Gerard JR. Aloe vera gel in peptic ulcer therapy: preliminary report. J Am Osteopath Assoc. 1963 Apr;62:731-5.
7. Shimizu M, et al. Interaction between Food Substances and the Intestinal Epithelium. Department of Applied Biological Chemistry, Graduate School of Agricultural and Life Sciences, The University of Tokyo, Bunkyo-ku, Todyo 113-8657, Japan. 2010;Online Publication, February 7, 2010.
8. Penissi AB, Rudolph MI, Piezzi RS. Role of mast cells in gastrointestinal mucosal defense. Biocell. 2003 Aug;27(2):163-72.
9. Vinson JA, Al Kharrat H, Andreoli L. Effect of Aloe vera preparations on the human bioavailability of vitamins C and E. Phytomedicine. 2005 Nov;12(10):760-5.
10. Yeh GY, Eisenberg DM, Kaptchuk TJ, Phillips RS. Systematic review of herbs and dietary supplements for glycemic control in diabetes. Diabetes Care. 2003 Apr;26(4):1277-94.
11. Roman-Ramos R, Flores-Saenz JL, Partida-Hernandez G, Lara-Lemus A, Alarcon-Aguilar F. Experimental study of the hypoglycemic effect of some antidiabetic plants. Arch Invest Med (Mex). 1991 Jan-Mar;22(1):87-93.
12. Rajasekaran S, Sivagnanam K, Ravi K, Subramanian S. Hypoglycemic effect of Aloe vera gel on streptozotocin-induced diabetes in experimental rats. J Med Food. 2004; 7(1):61-6.
13. Lim BO, Seong NS, Choue RW, Kim JD, Lee HY, Kim SY, Yu BP, Jeon TI, Park DK. Efficacy of dietary aloe vera supplementation on hepatic cholesterol and oxidative status in aged rats. J Nutr Sci Vitaminol (Tokyo). 2003 Aug;49(4):292-6.
14. Agarwal OP. Prevention of atheromatous heart disease. Angiology. 1985 Aug;36(8):485-92.

15. Marzorati M, et al. In vitro modulation of the human gastrointestinal microbial community by plant-derived polysaccharide-rich dietary supplements. Int J Food Microbiol. 2010 May 15;139(3):168-76.
16. Yagi A, Nakamori J, Yamada T, Iwase H, Tanaka T, Kaneo Y, Qiu J, Orndorff S. In vivo metabolism of aloemannan. Planta Med. 1999 Jun;65(5):417-20.
17. Robert A. Sinnott, Jane Ramberg, Jakob M. Kirchner, Cherie Oubre, Christy Duncan, Stephen Boyd, and John E. Kalns. Utilization of Arabinogalactan, Aloe vera gel polysaccharides and a mixed saccharide dietary supplement by human colonic bacteria in vitro. International Journal of Probiotics and Prebiotics, Volume 2, Number 2/3, pp. 97-104 (2007).
18. Parihar MS, Chaudhary M, Shetty R, Hemnani T Susceptibility of hippocampus and cerebral cortex to oxidative damage in streptozotocin treated mice: prevention by extracts of Withania somnifera and Aloe vera. J Clin Neurosci. 2004 May;11(4):397-402.
19. Esteban A, Zapata JM, Casano L, Martin M, Sabater B. Peroxidase activity in Aloe barbadensis commercial gel: probable role in skin protection. Planta Med. 2000 Dec;66(8):724-7.
20. Hu Y, Xu J, Hu Q. Evaluation of antioxidant potential of aloe vera (Aloe barbadensis miller) extracts. J Agric Food Chem. 2003 Dec 17;51(26):7788-91.
21. Eshghi F, Hosseinimehr SJ, Rahmani N, et al Effects of Aloe vera Cream on Posthemorrhoidectomy Pain and Wound Healing: Results of a Randomized, Blind, Placebo-Control Study. J Altern Complement Med. Jun2010;16(6):647-50.
22. MacKay D, Miller AL. Nutritional support for wound healing. Altern Med Rev. 2003 Nov;8(4):359-77.
23. Visuthikosol V, Chowchuen B, Sukwanarat Y, Sriurairatana S, Boonpucknavig V. Effect of aloe vera gel to healing of burn wound a clinical and histologic study. J Med Assoc Thai. 1995 Aug;78(8):403-9.

These statements have not been evaluated by the Food & Drug Administration. This product is not intended to diagnose, treat, cure or prevent disease.

## BiAloe® is Organic Inner Leaf Aloe vera Powder

- HIGHEST Total Acemannan – On Average 18%
- HIGHEST Immunomodulatory Acemannan < 400 KDa
- HIGHEST Bio-available Acemannan < 50 KDa
- FULL SPECTRUM of Molecular Weight Polysaccharides
- HIGHEST Polysaccharide Content – On Average 20%
- Aloin Free (<0.00142%)
- Completely Water Soluble
- Excellent Clean Taste
- Packaged in 1 Kg Oxygen and UV Light Barrier Packs



11218 Sagemeadow Ln., Houston, TX 77089

p: 281.480.8811

f: 281.480.5590

e: info@lorandlabs.com

www.lorandlabs.com



BiAloe® is the registered trademark of Lorand Laboratories, LLC  
Copyright© 2016 Lorand Laboratories, LLC  
FORMULATION GUIDE & STRUCTURE FUNCTION CLAIMS Rev No 2016-1